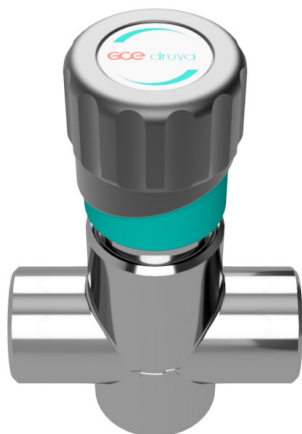


## VPLDRMAR – DRUVA®PUR REGULATING VALVE

VALVE | PURE LINE (BRASS CHROME PLATED) | 20 m³ SERIES | DIAPHRAGM REGULATING VALVE  
| MANUAL ACTUATION | 2-PORT VERSION



2-port metal diaphragm regulating valve is used in supply systems for pure, inert, flammable, oxidizing gases and gas mixtures. Not usable for corrosive and toxic gases and gas mixtures. Maximum gas purity is 6.0.

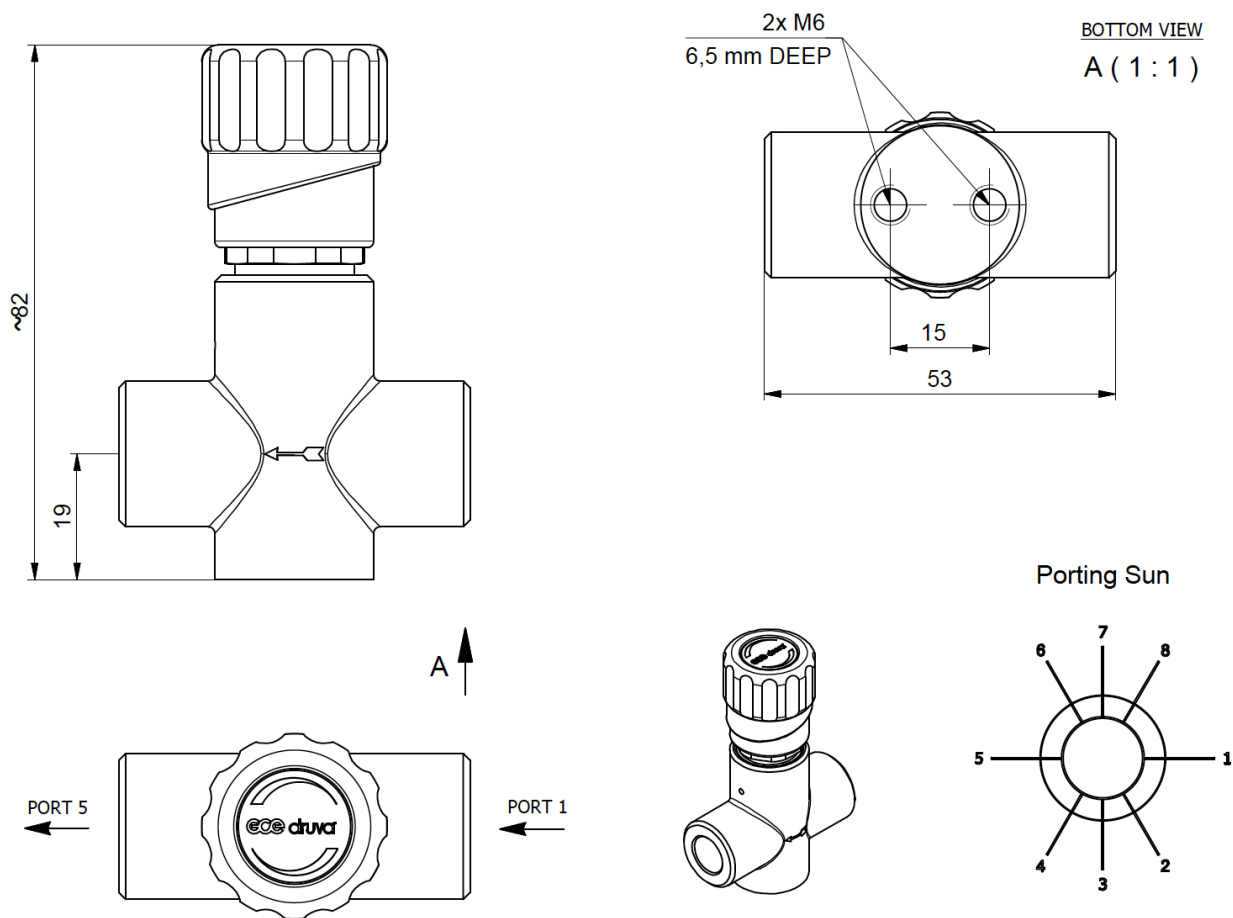


### SPECIAL FEATURES:

- > Elgiloy diaphragm tightening system to atmosphere
- > Compact design
- > Designed and approved in accordance with relevant sections of ISO 10297:2015
- > Electrostatic chargeability test
  - Fulfills requirements according to ISO 80079-36; IEC TS 60079-32-1 and German TRGS 727
  - Usable in EX- areas zones 1 and 2 for gases with explosion risk group I; IIA; IIB; IIC

TECHNICAL DATA	
<b>Working temperature:</b>	-20 °C to +60 °C
<b>Inlet / outlet ports:</b>	1/4" NPT female Further connections – see technical drawing
<b>Max. working pressure:</b>	50 bar
<b>Cv-value:</b>	< 0,02
<b>Seat diameter:</b>	2 mm
<b>Leakage rate seat:</b>	<5x10 <sup>-4</sup> mbar l/s (Helium)
<b>Leakage rate outside:</b>	<1x10 <sup>-9</sup> mbar l/s (Helium)
<b>Filter</b>	1x for each inlet 1x for each outlet
<b>Weight:</b>	0,30 kg
<b>Material gas wetted parts:</b>	
<b>Valve body:</b>	Brass chrome plated
<b>Valve diaphragm:</b>	1x Elgiloy
<b>Valve seat:</b>	Metal sealing
<b>Valve poppet:</b>	Stainless steel
<b>Test in production:</b>	Pressure test with Helium of each item
	Seat leakage test with Helium of each item
	Helium leak test of each valve against atmosphere
	Test of functionality of each item
<b>Approvals during development:</b>	Type test in accordance with relevant sections of ISO 10297
	Electrostatic chargeability test
	<ul style="list-style-type: none"> <li>• Fulfill requirements according ISO 80079-36, IEC TS 60079-32-1 and German TRGS 727</li> <li>• Usable in EX-areas zones 1 and 2 for gases with explosion risk group I, IIA, IIB, IIC</li> </ul>

## TECHNICAL DRAWING



N14F - NPT1/4" female  
 0000 - without (Port 3 & Port 7)  
 M03B - Compression Fitting ø 3 MM Brass  
 M06B - Compression Fitting ø 6 MM Brass  
 M08B - Compression Fitting ø 8 MM Brass  
 M10B - Compression Fitting ø 10 MM Brass  
 M12B - Compression Fitting ø 12 MM Brass

M03S - Compression Fitting ø 3 MM SST  
 M06S - Compression Fitting ø 6 MM SST  
 M08S - Compression Fitting ø 8 MM SST  
 M10S - Compression Fitting ø 10 MM SST  
 M12S - Compression Fitting ø 12 MM SST  
 IX2B - Compression Fitting ø 1/8" Brass  
 IX4B - Compression Fitting ø 1/4" Brass

IX6B - Compression Fitting ø 3/8" Brass  
 IX8B - Compression Fitting ø 1/2" Brass  
 IX2S - Compression Fitting ø 1/8" SST  
 IX4S - Compression Fitting ø 1/4" SST  
 IX6S - Compression Fitting ø 3/8" SST  
 IX8S - Compression Fitting ø 1/2" SST

## ORDER CODE:

Example for a Valve | PUR Linie | Brass Chrome Plated | Low Flow | Diaphragm regulating valve | Manual Actuation | 2-Port Version

VPL	DR	M	AR	EX	N14F (1/4" NPT female)	0000	N14F (1/4" NPT female)	0000
	Type	Actuation	Porting Code	Working Pressure (bar)	Connection Port 1	Connection Port 3	Connection Port 5	Connection Port 7
	DS Diaphragm regulating valve	M Manual	AR 2-Port (1 In   5 Out)	EX 50	possible connection  see technical drawing	0000 without	possible connection	0000 without
							see technical drawing	

Order code (as described above) without special characters or spaces! Complete Order Code **VPLDRMAREXN14F0000N14F0000**

